



MANUAL – INSTALLATION

Thermal Bi-Directional Pattern Diffusers

TBDI6-HC

v100 – Issue Date: 8/25/14

© 2014 Price Industries Limited. All rights reserved.

PRICE[®]

THERMAL BI-DIRECTIONAL PATTERN DIFFUSERS

INSTALLATION INSTRUCTIONS

General Information:

This diffuser is designed to provide a 1-way horizontal discharge pattern during cooling and a vertical discharge pattern during heating. The diffuser will automatically change its discharge pattern based on the supply air temperature.

- For full cooling mode, the thermal actuator requires supply air temperatures of 69°F (21°C) or colder.
- For full heating mode, the thermal actuator requires supply air temperatures of 81°F (27°C) or warmer.
- Changeover time between modes is approximately 10 minutes. Actual time may vary depending on airflow and supply air temperature.

Diffuser Installation:

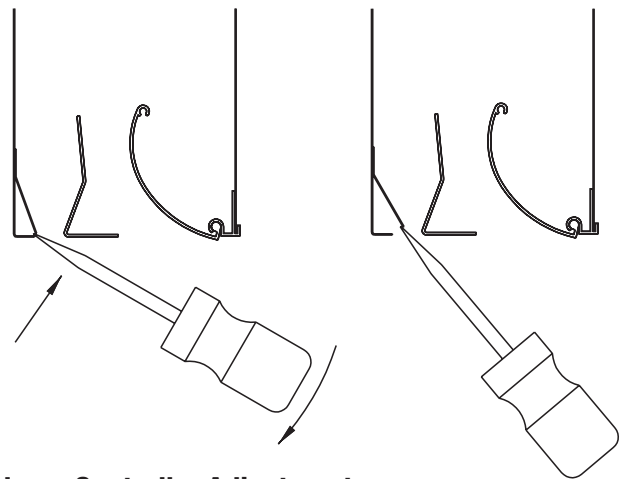
1. Remove the diffuser from its packaging.
2. Install into the ceiling and connect ductwork.

NOTE: The horizontal discharge pattern blows air towards the inlet-side of the diffuser.

WARNING NOTES:

- **DO NOT** HEAT THE ACTUATOR WITH AN OPEN FLAME OR TO TEMPERATURES OF 120°F (49°C) OR GREATER.
- **DO NOT** RECALIBRATE THE ACTUATOR ASSEMBLY.
- **DO NOT** GRIP THE ACTUATOR WITH HAND TOOLS.
- **DO NOT** PLACE OBJECTS INTO THE DIFFUSER THAT WOULD RESTRICT THE MOVEMENT OF THE ACTUATOR ASSEMBLY OR THE CHANGE-OVER BLADE.
- **DO NOT** MANUALLY MOVE THE CHANGE-OVER BLADE.

FIGURE 1 ▼



Volume Controller Adjustment:

The vertical slot incorporates a trim adjustable volume controller to reduce the airflow. Adjustments can be accomplished by inserting a flat head screwdriver under the volume controller and bending it upward to the desired position (see **Figure 1**):

1. At one end of the diffuser, make the first adjustment
2. Move a few inches down the length of the diffuser and adjust the volume controller the same amount
3. Continue making adjustments down the length of the diffuser until the volume controller is at a consistent angle along the full length of the diffuser. Re-adjustments may be necessary.

This document contains the most current product information as of this printing.
For the most up-to-date product information, please go to www.priceindustries.com.

© 2014 Price Industries Limited. All rights reserved.

price[®]